
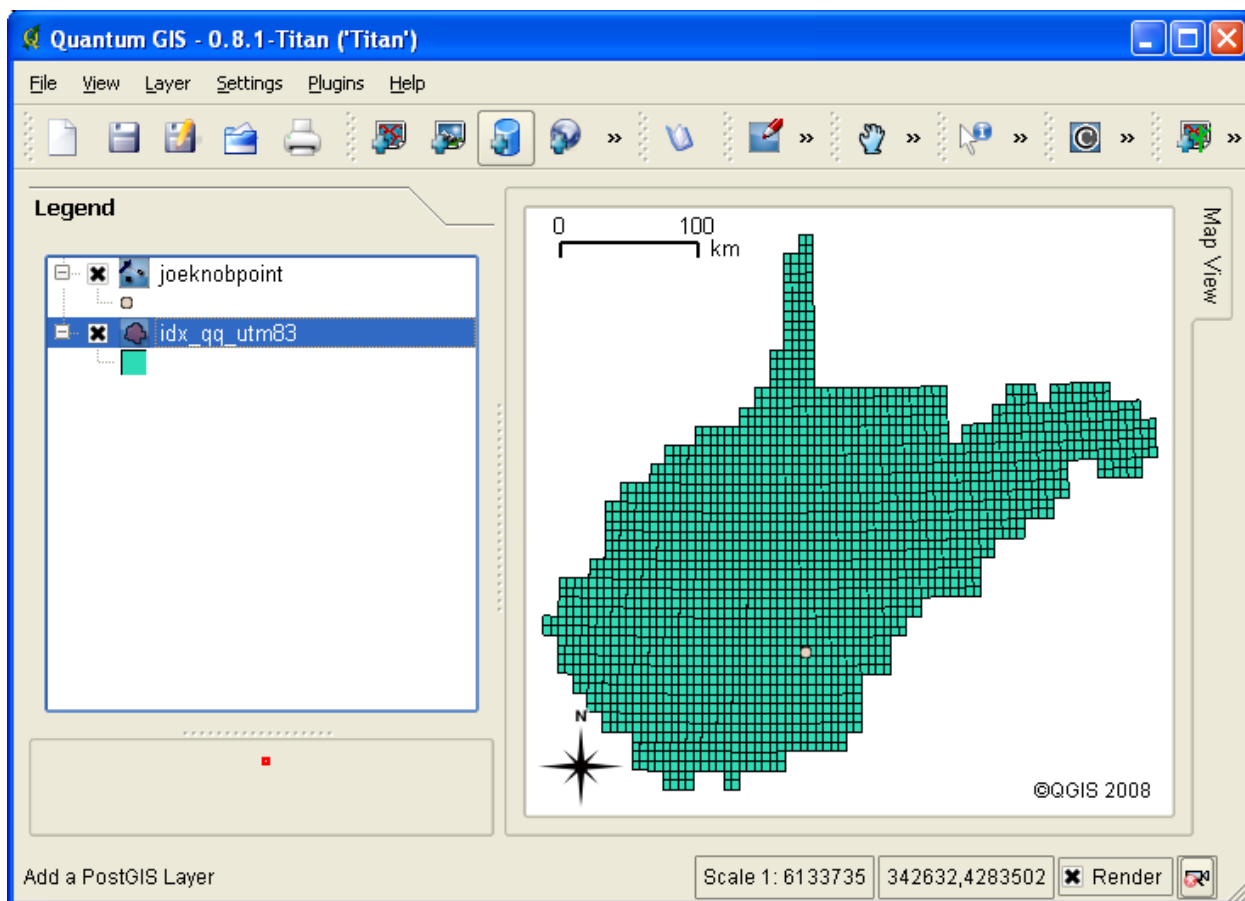
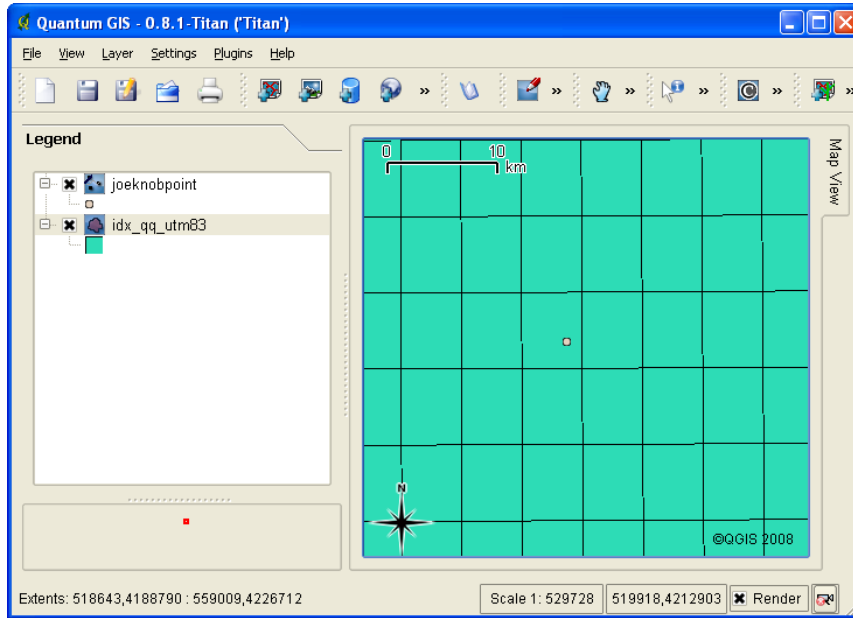



How to Add Aerial Photos to Quantum GIS for a background surface to shapefile points

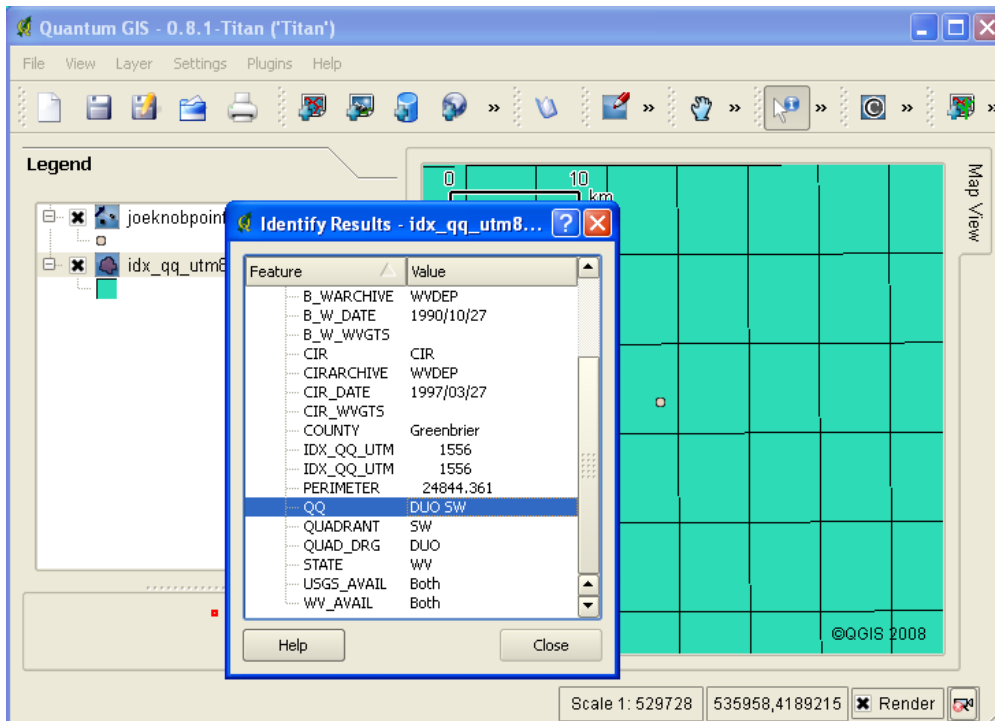
1. After you have added shapefile points into QGIS, download the “WV UTM DOQQ Grid” shapefile layer from the education resources page on <http://gis.marshall.edu>
2. Unzip the shapefile to a folder on your hard drive
3. Add the WV UTM DOQQ grid to your QGIS map
 - a. In QGIS, go to layer → add vector layer or click the “add vector layer” button 
 - b. Navigate to the folder where you extracted the WVUTMQQGrid.zip file and select the idx_qq_utm83.shp shapefile
 - c. You should have a map that now has your shapefile points and a shapefile grid of the WV Quarter Quads (make sure the quarter quad layer is under your shapefile points in the QGIS legend so your points are visible). Your map should look like the following.



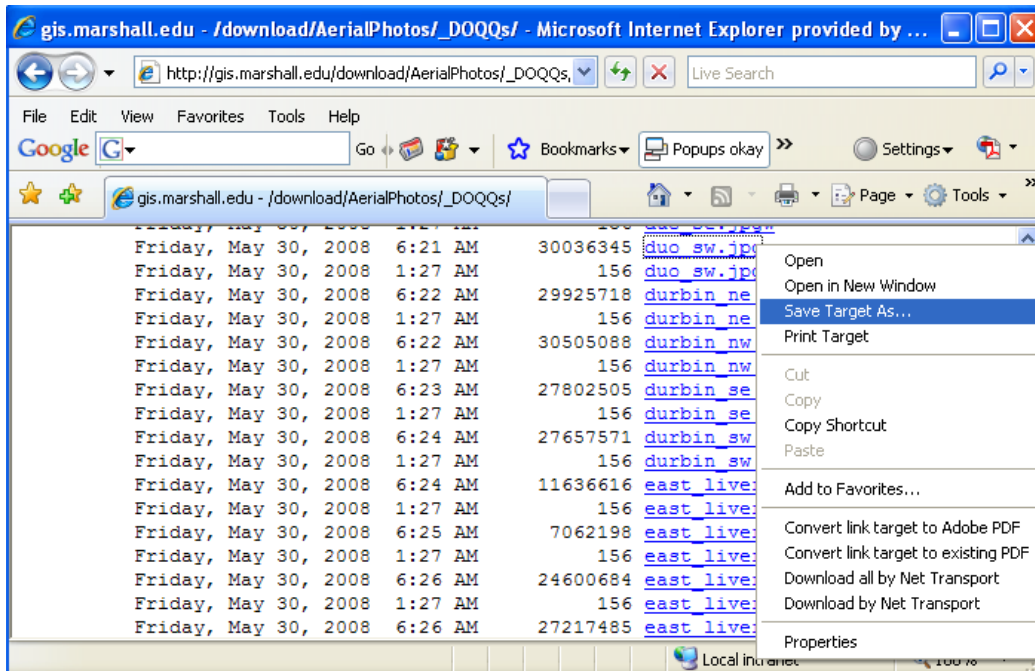
4. Zoom in on your point so you can clearly see the grid squares




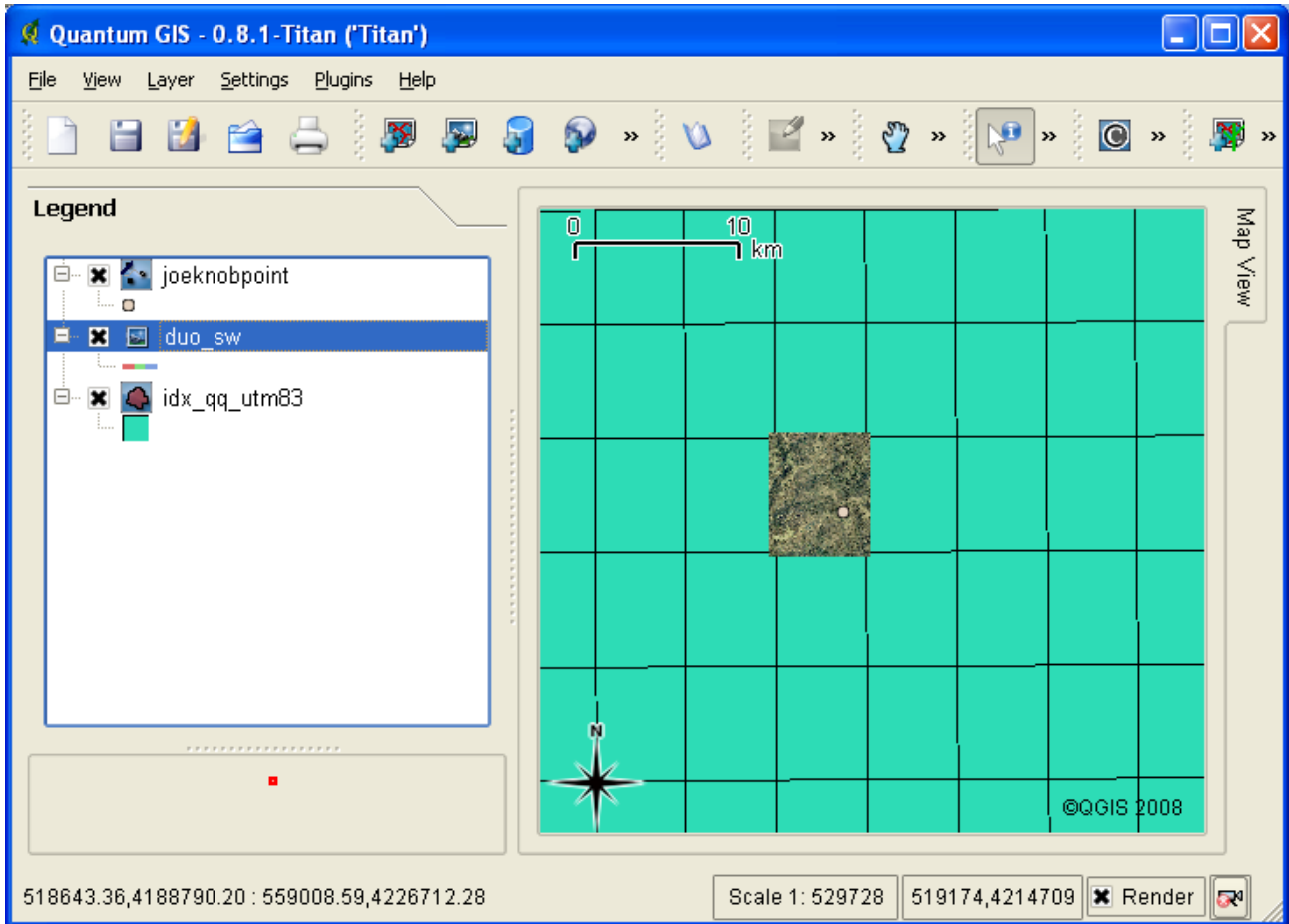
5. Click on the “identify features” button  in your toolbar then click on the grid square that surrounds your point. In the identify box that appears, scroll down until you can see the QQ feature field name. The value of the QQ field contains the Quarter Quad name of your aerial photo. The point in this example is in the “DUO SW” quarter quad.



6. Go back to the “education resources” page on the <http://gis.marshall.edu> website and scroll down to the “Download System Rasters” section and click on the “WV Aerial Photos – 2003 DOQQs (JPG+JPGW)” link.
7. You will see a list of all of the DOQQ aerial photos for WV. Scroll down until you see the name of your quarter quad. Right-click on files that contain the name of your quarter quad and choose “save target as...” and save the files to your hard drive. You will need to download a .JPG file and a .JPGW file.



8. After you have download all of the JPG and JPGW quarter quad aerial photos you need, go back to QGIS and add the raster aerial photos to your project.
 - a. In QGIS, go to layer → add raster layer or click the “add raster layer” button 
 - b. Navigate to the folder where you saved the aerial photo JPG and JPGW files, change the “files of type” dropdown menu to “AIG GRASS and all other files (*)” so the JPG files are visible, and select your Quarter Quad JPG aerial photo (example: duo_sw.jpg)
 - c. You should have a map that now has your shapefile points, a shapefile grid of the WV Quarter Quads, and an aerial photo surface background for your point (make sure the aerial photo layer is under your shapefile points and above the quarter quad grid in the QGIS legend so all of your layers are visible). Your map should look like the image on the following page.



You can use the zoom tool to see more detail in the aerial photo....

